

Appendix C

Replacement Pages of Updated LMP Report

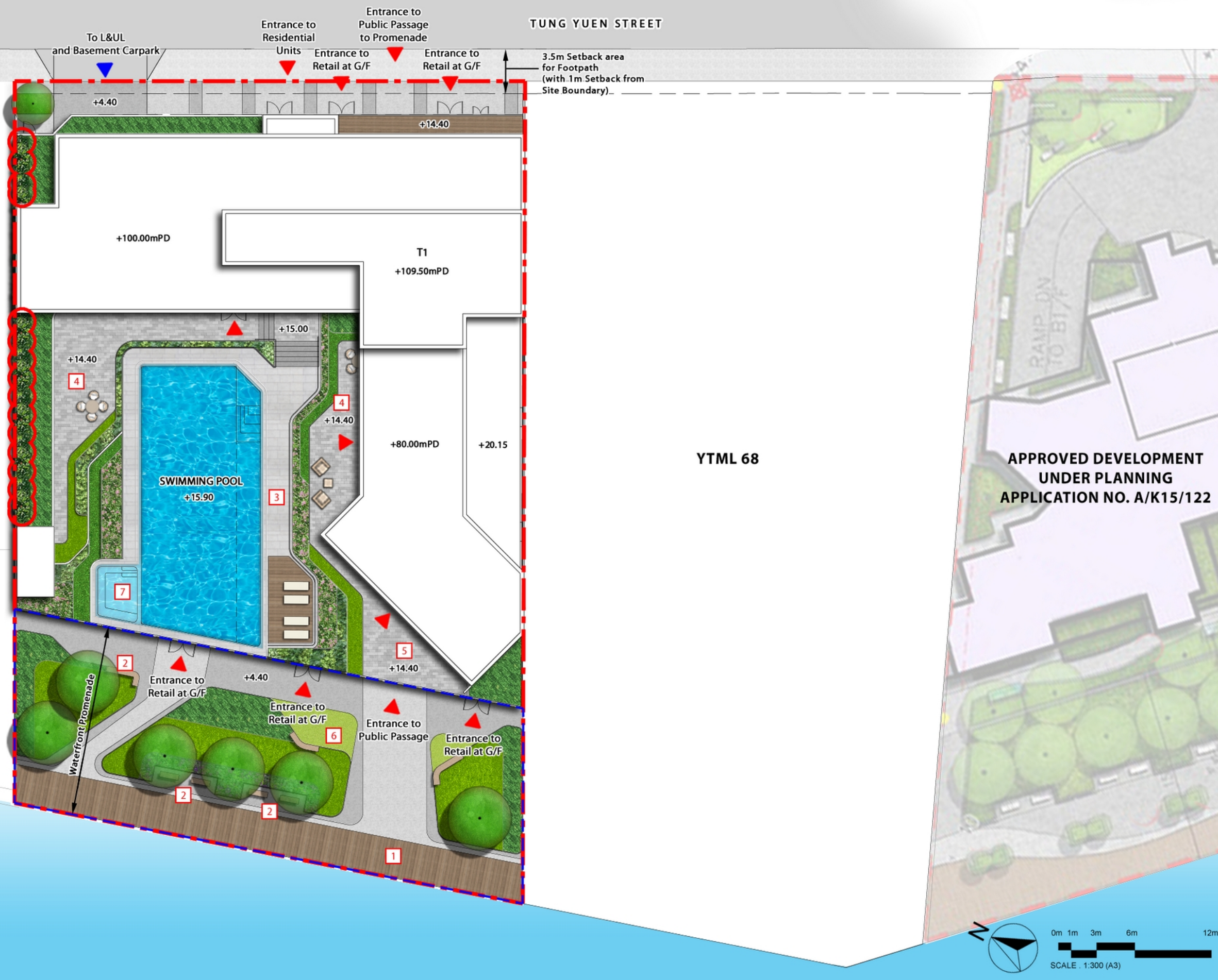
LEGEND:

--- APPLICATION SITE BOUNDARY
 --- VOLUNTARY WATERFRONT PROMENADE (VWP) BOUNDARY (Not less than 608 sqm)

- PROPOSED NEW TREES
- PROPOSED TALL HEDGE PLANTING
- PROPOSED SHRUB PLANTING
- PROPOSED LAWN AND GROUND COVER PLANTING
- PROPOSED SWIMMING POOL
- PROPOSED DECK
- PROPOSED PAVING
- PROPOSED LOOSE FURNITURE
- PROPOSED LEVEL
- PEDESTRIAN ACCESS
- VEHICULAR ACCESS

LANDSCAPE COMPONENTS:

- 1 Voluntary Waterfront Promenade (VWP)
- 2 Benches & Seating
- 3 Pool Deck
- 4 Outdoor Lounge Area
- 5 Viewing Deck
- 6 Activity Lawn with Seating
- 7 Jacuzzi



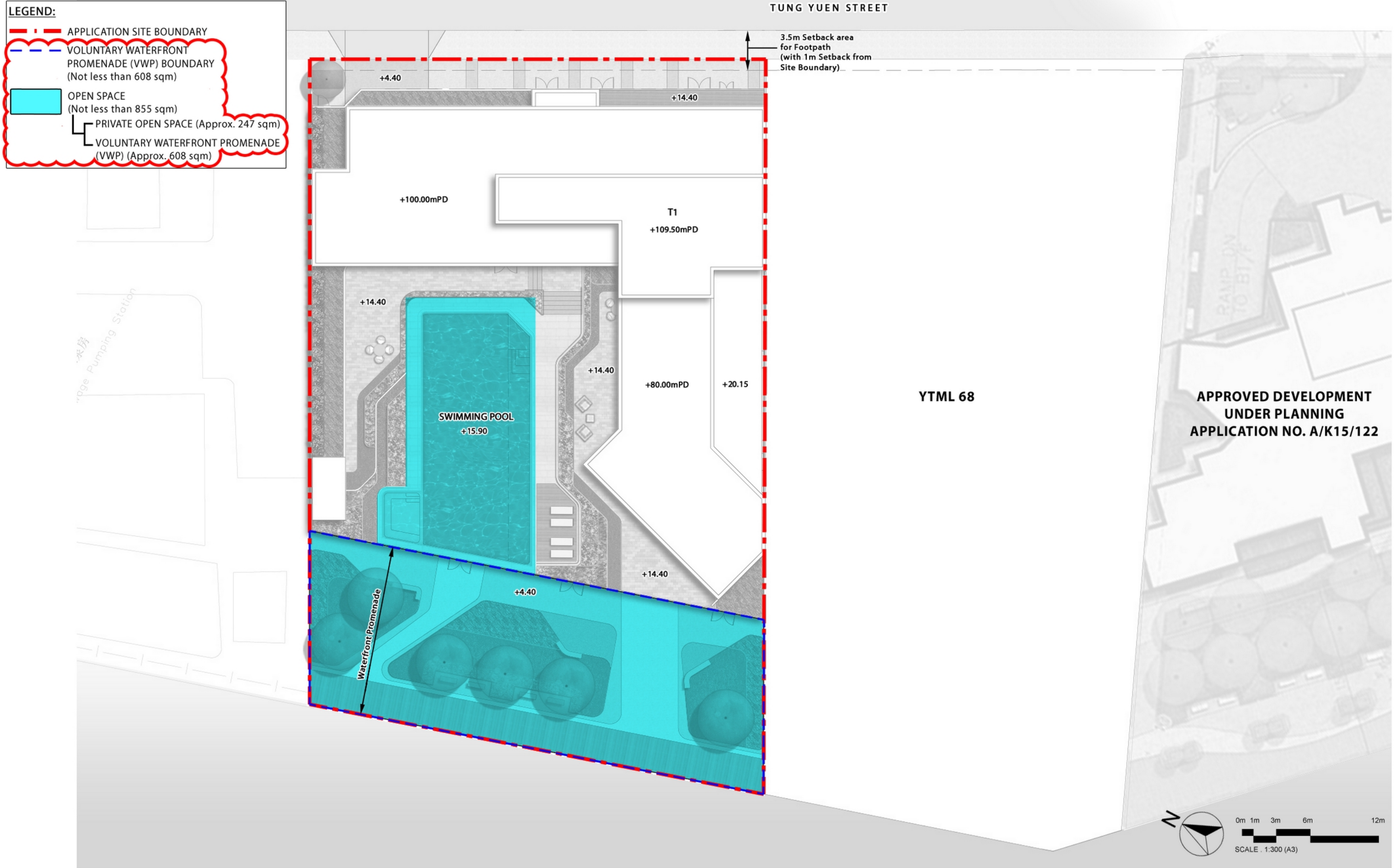
Section 16 Application for Proposed Flat, Shop and Services and Eating Place with Minor Relaxation of Plot Ratio and Building Height Restrictions in "Residential (Group E)" Zone at No. 4 Tung Yuen Street, Yau Tong, Kowloon
 Landscape Plan - Composite Plan

Dwg. No. : 2023204-LMP-01a
 Date : APR 2025
 (A3-size)



LEGEND:

- APPLICATION SITE BOUNDARY
- VOLUNTARY WATERFRONT PROMENADE (VWP) BOUNDARY (Not less than 608 sqm)
- OPEN SPACE (Not less than 855 sqm)
 - PRIVATE OPEN SPACE (Approx. 247 sqm)
 - VOLUNTARY WATERFRONT PROMENADE (VWP) (Approx. 608 sqm)



Section 16 Application for Proposed Flat, Shop and Services and Eating Place with Minor Relaxation of Plot Ratio and Building Height Restrictions in "Residential (Group E)" Zone at No. 4 Tung Yuen Street, Yau Tong, Kowloon

Open Space Demarcation Plan

Dwg. No. : 2023204-ODP-01a

Date : APR 2025

(A3-size)



axxa group

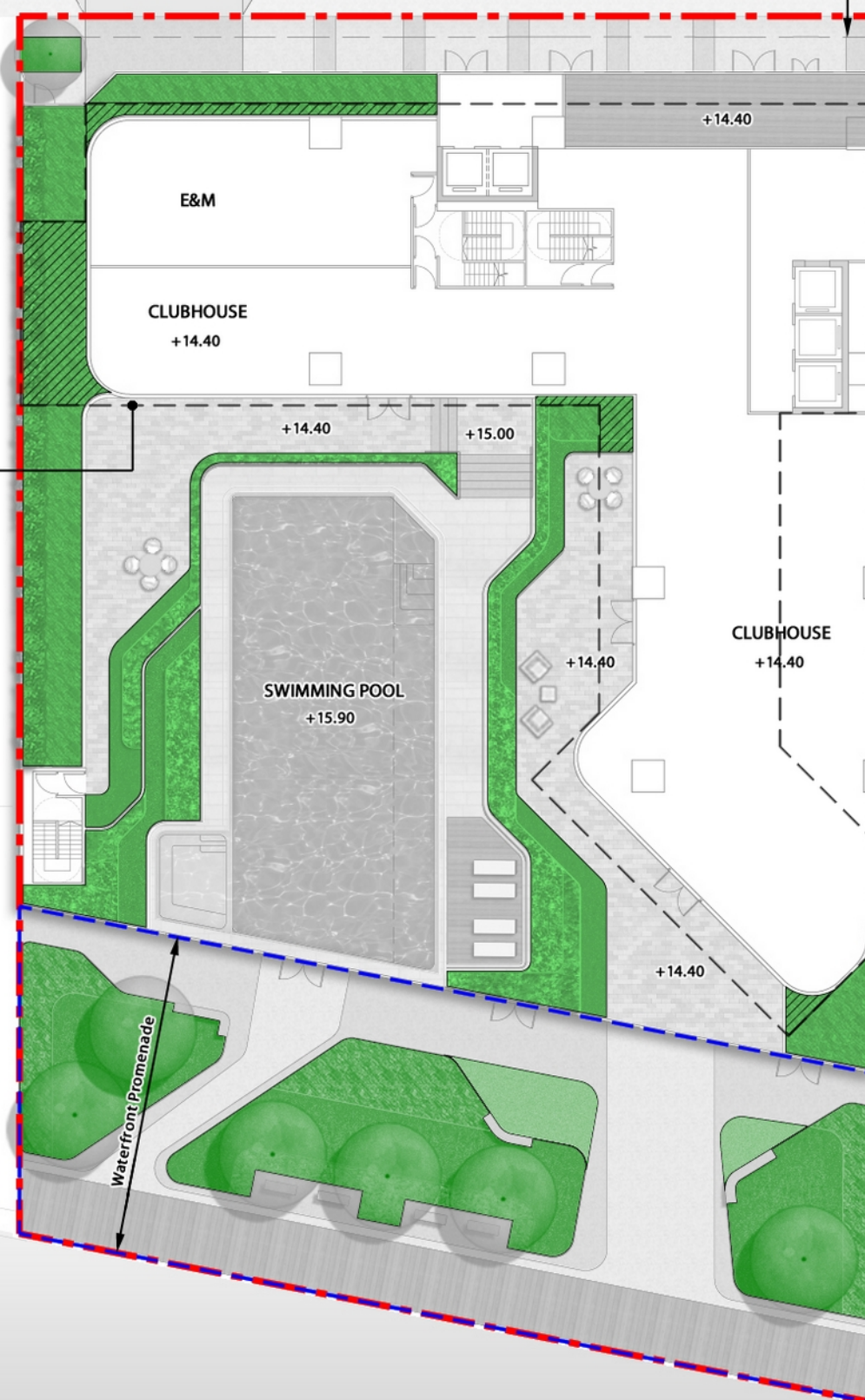
LEGEND:

- APPLICATION SITE BOUNDARY
- VOLUNTARY WATERFRONT PROMENADE (VWP) BOUNDARY (Not less than 608 sqm)
- UNCOVERED
- COVERED
- TOTAL GREENERY COVERAGE (Not less than 20% of the Site Area)

TUNG YUEN STREET

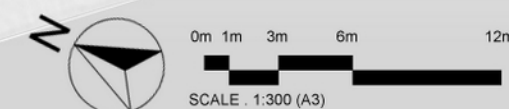
3.5m Setback area for Footpath (with 1m Setback from Site Boundary)

BUILDING LINE ABOVE



YTML 68

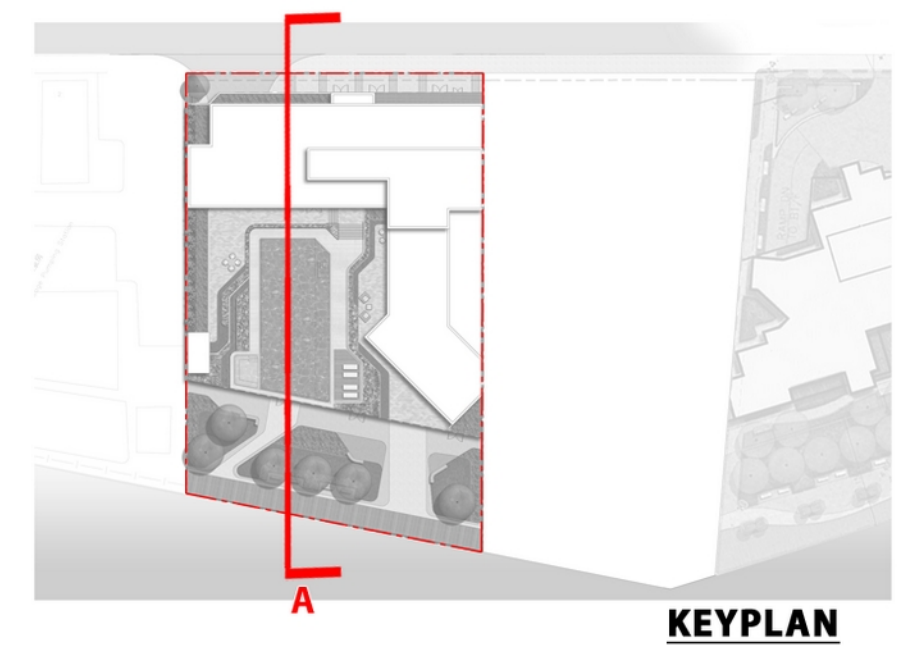
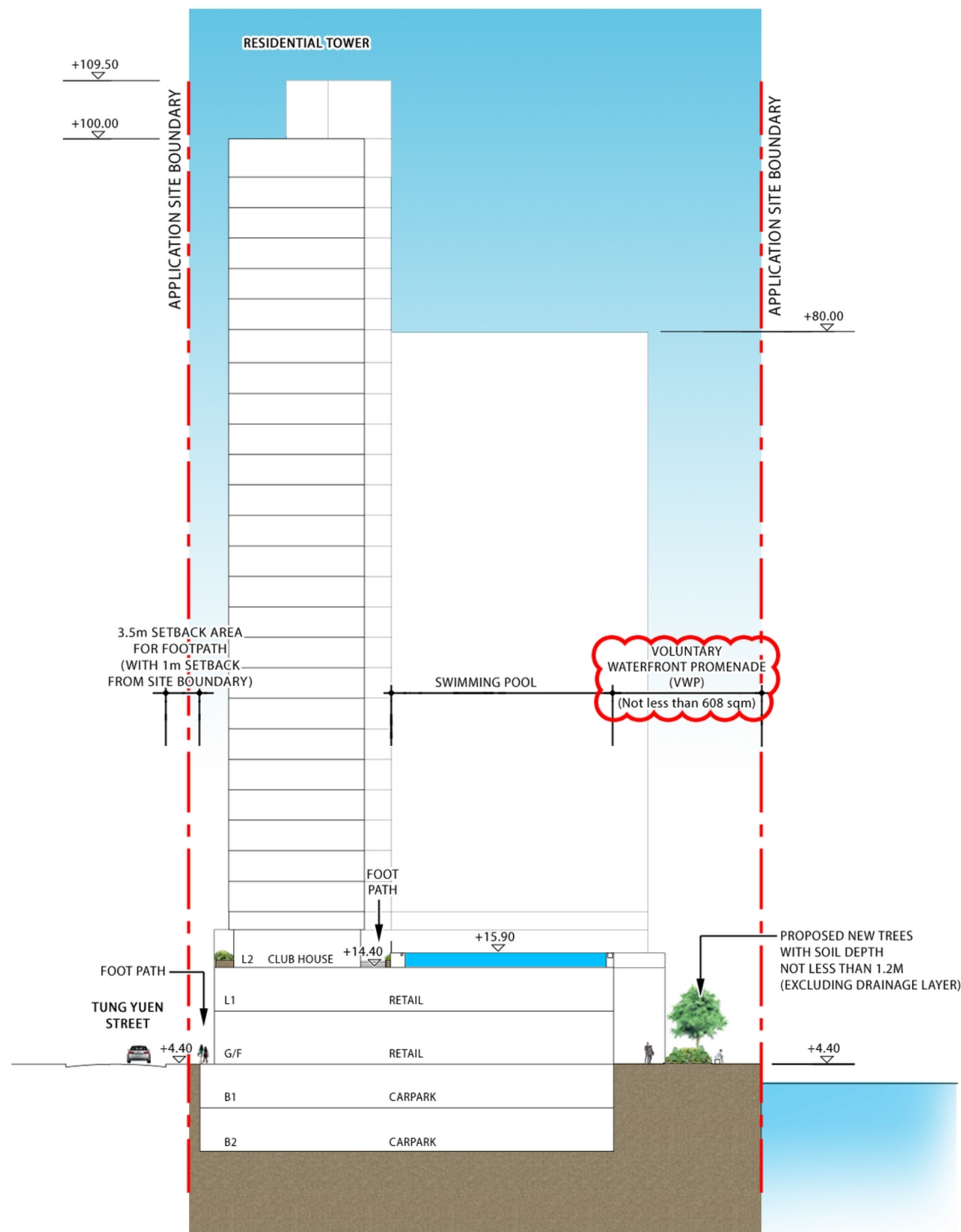
APPROVED DEVELOPMENT
UNDER PLANNING
APPLICATION NO. A/K15/122



Section 16 Application for Proposed Flat, Shop and Services and Eating Place with Minor Relaxation of Plot Ratio and Building Height Restrictions in "Residential (Group E)" Zone at No. 4 Tung Yuen Street, Yau Tong, Kowloon
Greenery Demarcation Plan

Dwg. No. : 2023204-GDP-01a
Date : APR 2025
(A3-size)





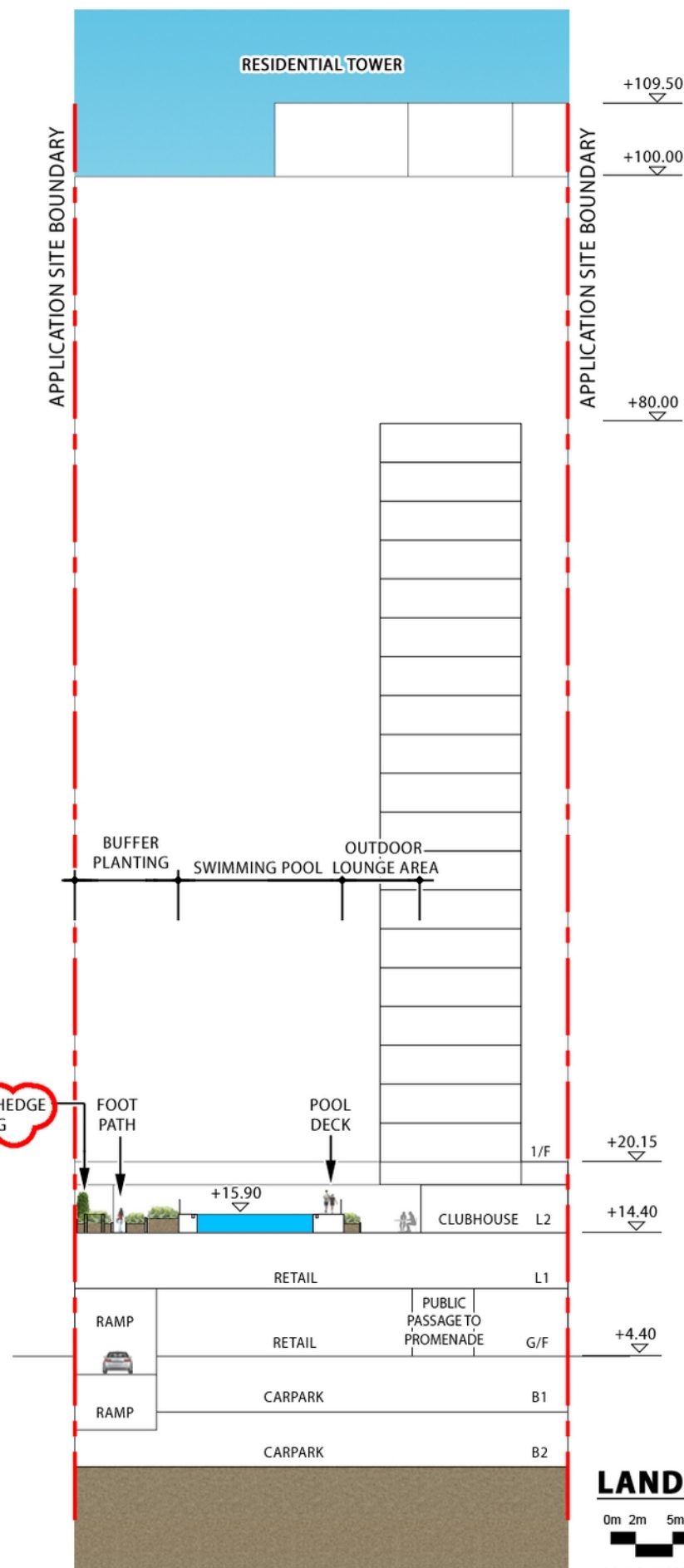
LANDSCAPE SECTION A

0m 2m 5m 10m 20m

SCALE : 1:500 (A3)

Section 16 Application for Proposed Flat, Shop and Services and Eating Place with Minor Relaxation of Plot Ratio and Building Height Restrictions in "Residential (Group E)" Zone at No. 4 Tung Yuen Street, Yau Tong, Kowloon
Landscape Section A

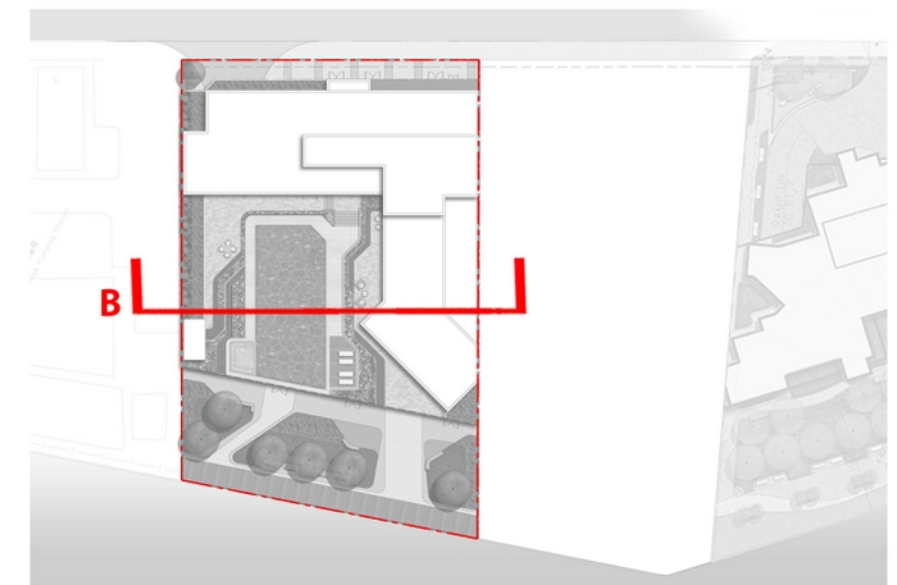
Dwg. No. : 2023204-SEC-01a
 Date : APR 2025
 (A3-size)



LANDSCAPE SECTION B

0m 2m 5m 10m 20m

SCALE : 1:500 (A3)



KEYPLAN

Section 16 Application for Proposed Flat, Shop and Services and Eating Place with Minor Relaxation of Plot Ratio and Building Height Restrictions in "Residential (Group E)" Zone at No. 4 Tung Yuen Street, Yau Tong, Kowloon Landscape Section B

Dwg. No. : 2023204-SEC-02a
Date : APR 2025
(A3-size)

